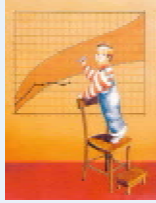


ENDOCRINOLOGY

Growth Adipokines Energy Metabolism Diabetes Research Tumor Research



Growth Diagnostics

IGF-I - Insulin-like Growth Factor-I ELISA / RIA (E20/R20/R22)
IGF-I - Insulin-like Growth Factor-I ELISA - Multiple Species (E-MS-1)
IGF-I - Fast-Insulin-like Growth Factor-I Lateral Flow Test (MED-LFI)
IGF-II - Insulin-like Growth Factor-II ELISA / RIA (E30/R30)
IGFBP-1 - Insulin-like Growth Factor Binding Protein-1 ELISA (E01)
IGFBP-2 - Insulin-like Growth Factor Binding Protein-2 ELISA (E05)
IGFBP-3 - Insulin-like Growth Factor Binding Protein-3 ELISA / RIA (E03A/R11)
f-IGFBP-3 - functional Insulin-like Growth Factor Binding Protein-3 LIA (E04A)
IGFBP-6 - Insulin-like Growth Factor Binding Protein-6 ELISA (E112)
ALS - Acid Labile Subunit ELISA (E35)
hGH - human Growth Hormone ELISA (E02/E022)
GHBP - Growth Hormone Binding Protein ELISA (E024)



Adipokines

Adiponectin ELISA (E09)
Resistin ELISA (E50)
Leptin ELISA / RIA (E07/E077/R44)
bioLEP ELISA Quantification of Functional Leptin (L07)
sLEP-R ELISA Determination of Soluble Leptin Receptor (R07)
Chemerin ELISA (E102)
Progranulin ELISA (E103)
Vaspin ELISA (E106)

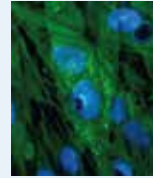


Animal Tests

Mouse-/Rat-IGF-I - Insulin-like Growth Factor-I ELISA (E25)
Mouse-/Rat-IGFBP-2 - Insulin-like Growth Factor Binding Protein-2 ELISA (E08)
Mouse-/Rat-IGFBP-3 - Insulin-like Growth Factor Binding Protein-3 ELISA (E031)
Mouse-/Rat-GH - Growth Hormone ELISA (E023)
Mouse-Adiponectin ELISA (E091-M)
Rat-Adiponectin ELISA (E091-R)
Mouse-/Rat-Leptin ELISA (E06)

INFECTIOLOGY

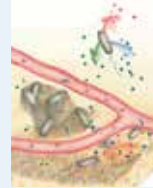
Virus Bacteria Cell Culture Native Virus Antigen Antibodies



Hepatitis A Virus

Anti-HAV Antibody ELISA (E10)
Anti-HAV IgM Antibody ELISA (E11)
HAV-Antigen ELISA (E12)
HAV-RNA HAVrealDETECT Kit (HAV RD50)
HAV Antigen (A30, C30)
HAV Antibody IgG2a Clone 7E7 (M40, K50, K51, K52)
HAV Antibody IgM Clone 4E1 (M41)

Coxsackievirus B3 Antibody IgG2a Clone 31A2 (M47)



Pseudomonas aeruginosa

Anti-Pseudomonas aeruginosa IgG Antibody ELISA (E15)
Detection of three antibodies in one assay:

Anti-Elastase
Anti-Exotoxin A
Anti-Alkaline Protease

CNS (Central Nervous System)

Neurodegeneration Antibodies Alcohol Addiction



CNS Markers

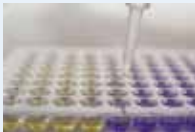
Progranulin ELISA (E103)
PEth Antibody Anti-Phosphatidylethanol IgG2b Clone 1-1-1 (M49)
PEth Antibody Anti-Phosphatidylethanol IgG2b Clone 3-1-1 (M50)
EtG Antibody Anti-Ethyl Glucuronide IgG2b Clone 31B12 (M48)
EtG-BSA Conjugate (M46)

SERVICES

Raw Materials



Analyses



Development



Validation



Automation



Production



Progress in Diagnostics

Mediagnost Gesellschaft für Forschung und Herstellung von Diagnostika GmbH



Company

Mediagnost is an owner-managed small and medium-sized company in southwest Germany. Founded in 1985, 24 employees produce virus antigen (Hepatitis A) and antibodies as raw material for third parties and as starting material for own test systems. The own test systems are for use in research applications and clinical diagnostics (IVD) in the field of infection diagnostics (Hepatitis A, Pseudomonas aeruginosa) and for endocrinological applications (growth hormone, insulin-like growth factors, energy metabolism/obesity).



Products and technologies

Antibody-based technologies are employed for Mediagnost tests: ELISA; RIA; Lateral Flow Assay; Bead-based Multiplex Test systems (Flow Cytometer, open platform)

This includes generation and production of monoclonal antibodies, antigen production of virus and bacterial proteins.

Strengths

- Profound scientific and economic experience since 1985 in biotechnology and diagnostics
- Successful development and marketing of IVD test systems
- Certified quality management system (ISO 13485:2021)
- Regulatory experience (European Directive 98/79/EC | European Regulation 2017/746)
- Worldwide net of distribution partners
- Collaborative development and implementation of the best solution for the customer's projects

Target clients

- Research-based pharmaceutical companies: customized test development, test production and distribution: collaboration with CROs / study sites
- Clinical research organizations: consulting / customized test development, production of tests for clinical studies, measurement of patient samples (Mediagnost assays)
- Clinical Laboratories: conducting ELISA and / or RIA
- Clinical laboratories: commercialization of in-house tests
- Academic researchers: commercialization of a newly developed diagnostic test system
- Academic research groups & SMEs: participation as an industrial partner in research & development projects (e.g. Horizon Europe)
- Start-ups, SME, academic research groups: regulatory consulting & contract manufacturing in an ISO 13485:2021 certified quality management system (e.g. filling and packaging activities)