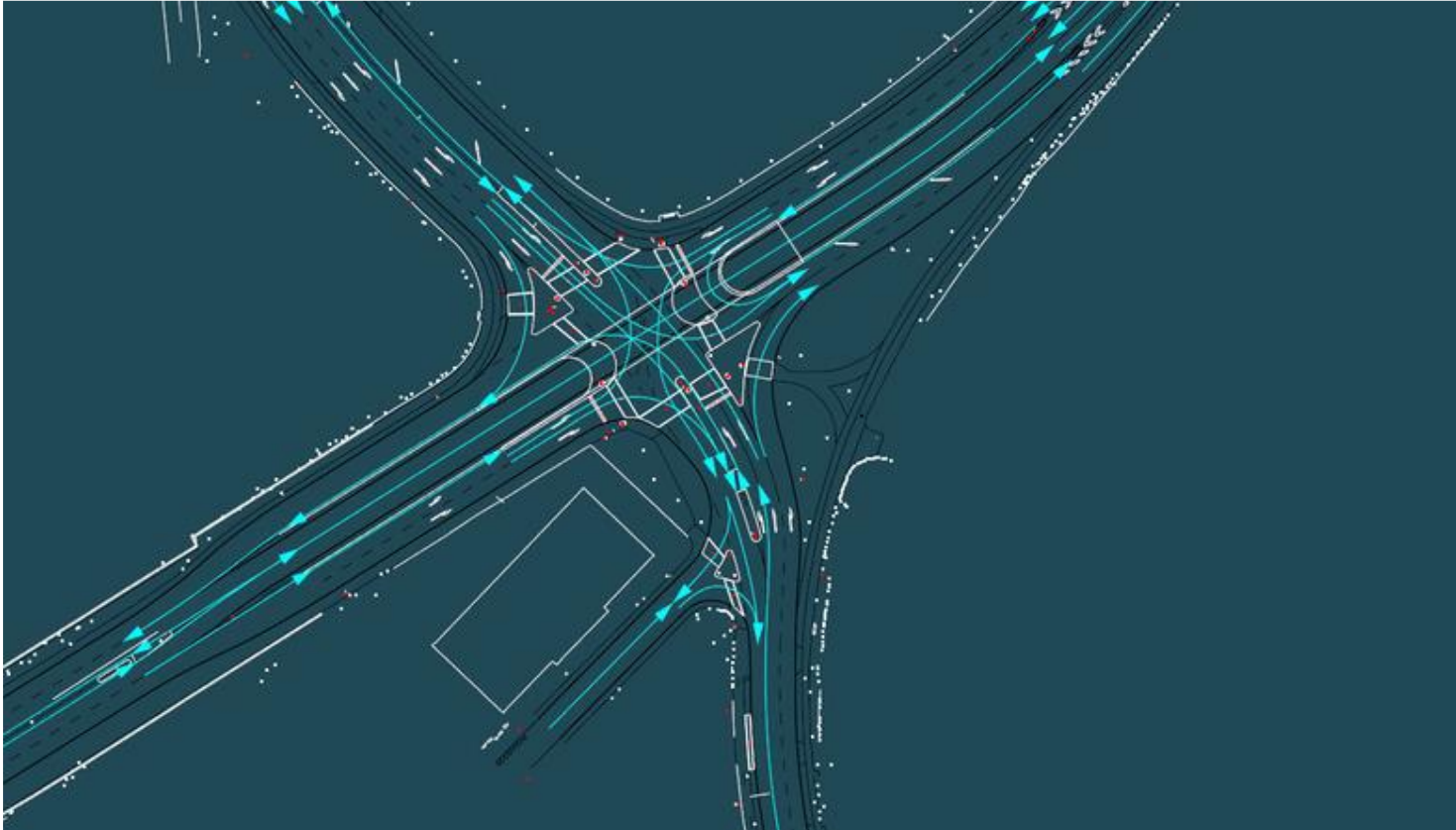


3D Mapping Solutions: bringing reality into digital worlds



Profile:

3DMapping high-precision road surface models are used as the basis for high-end simulators or simulation applications for all kinds of possible purposes in the field of virtual testing and virtual development.

Therefore, 3D Mapping Solutions builds the bridge between the real world and the digital twin for testing and simulation applications. High-precision built-plans are exported in appropriate formats including all objects, attributes and the complete, complex topological structure and thus may be used directly for customer applications.

Examples are the use of high-fidelity maps as in-car reference for autonomous driving developments, simulation for vehicle dynamics development and driving simulation on digital twins of complete road networks.

Services:

Road surface models for driving dynamics.

Ultra HD maps.

Inventory data.

Kinematic railway surveying.

Kinematic Tunnel surveying.

Racing tracks.

Simulation applications.

ADAS –Advanced Driver Assistance Systems.

Target:

Highway/roads network management and planning companies/authorities.

Municipalities.

Vehicle Manufacturers.

Testing tracks.

